



SAXOPHONE STRAPS & ACCESSORIES



THE TIPS OF **FRANCK BICHON**

BG PRIORITIES: COMFORT, RELIABILITY, DURABILITY



EVERY DAY, WE PAY MORE ATTENTION TO THE PAIN ASSOCIATED WITH PLAYING A MUSICAL INSTRUMENT. THROUGHOUT THE YEARS OF THEIR MUSICAL CAREERS, MUSICIANS SPEND MANY HOURS WITH AN EXTRA HEAVY WEIGHT OVER THEIR CERVICAL SPINE, SHOULDERS AND THEIR RIGHT HAND THUMB.

MUSICIANS OFTEN NEED FREQUENT MEDICAL TREATMENTS TO REMEDY AN INJURY THAT DEVELOPED OVER TIME. BG'S GOAL IS TO PREVENT THE PROBLEM FROM DEVELOPING IN THE FIRST PLACE. BG DESIGNS EACH OF ITS STRAPS THINKING ABOUT BOTH THE MUSICIAN'S HEALTH AND THE INSTRUMENT'S SAFETY.

TO TAKE CARE OF THE MUSICIANS HEALTH, WE DISTRIBUTE THE WEIGHT OF THE INSTRUMENT TO AVOID INJURING VITAL AREAS OF THE MUSICIAN'S ANATOMY. THIS IS SO THAT THE BODY POSTURE IS AS NATURAL AS POSSIBLE WHEN PLAYING. SAXOPHONE STRAPS LIKE THE HARNESS OR MORE RECENTLY THE "YOKE" HAVE REVOLUTIONIZED HOW THE MUSICIAN LIVES WITH HIS OR HER INSTRUMENT. THESE MODELS HAVE BEEN ADAPTED TO MEN'S, WOMEN'S AND CHILDREN'S ANATOMY AND ALLOW THEM TO ENJOY THEIR MUSICAL INSTRUMENTS WITHOUT PAIN OR DISCOMFORT.

BG STRAPS ARE HANDMADE IN FRANCE, USING THE BEST MATERIALS AND RIGOROUS QUALITY CONTROLS. THEY ARE EXAMINED IN THREE INDEPENDENT CONTROLS. BG STRAPS ARE MADE TO WITHSTAND THE RIGOROUS LIFESTYLE OF TODAY'S BUSY MUSICIANS. THEY HAVE DOUBLE BACKSTITCHES, WITH MORE THAN 42 STITCHES EACH. THIS MAKES DETERIORATION ALMOST IMPOSSIBLE.

TO PREVENT FRAYING, ALL THE THREADS ARE BURNT UP TO THREE TIMES. ALL OF THESE DETAILS ARE WHAT MAKE BG STRAPS RESISTANT AND VERY COMFORTABLE.

THERE IS A BG STRAP FOR EACH MOMENT AND SITUATION.
BG STRAPS ARE HANDMADE IN FRANCE.

COTTON PADDING: THE ANTI SWEAT MAKES THE DIFFERENCE



IN ORDER TO REACH THE HIGHEST PERFORMANCE LEVEL, THE MUSICIAN MUST BE COMPLETELY FOCUSED ON THE MUSIC AND THE INSTRUMENT. HE/SHE CANNOT BE DISTRACTED BY EXTERNAL FACTORS.

IN HOT AND HUMID CLIMATE OR UNDER THE LIGHTS ON STAGE IT IS VERY IMPORTANT TO FEEL ESPECIALLY COMFORTABLE IN ORDER TO REMAIN FOCUSED.

COTTON IS ONE OF THE OLDEST AND MORE FAMOUS FABRICS IN THE WORLD, BECAUSE OF ITS SOFTNESS, VERSATILITY AND LIGHTNESS CHARACTERIZE IT. COTTON CAN ABSORB UP TO 27 TIMES ITS WEIGHT IN WATER AND IT IS BREATHABLE. COTTON ALLOWS THE AIR TO FLOW; IT ABSORBS THE SWEAT AND TAKES IT TO THE SURFACE. THIS IS

DESCRIBED AS THE COTTON'S BREATHING AND IT IS CONSIDERED VERY APPEALING, ESPECIALLY IN HOT CLIMATES, ON STAGE OR WITH A MARCHING BAND.

BG STRAPS HAVE, THICK AND COMFORTABLE COTTON PADDINGS ON THE INSIDE PART OF THE STRAP, (EXCEPT MODELS FLEX, STANDARD HARNESS AND BRACE YOKE) THAT ABSORB SWEAT, PROVIDING HIGH COMFORT.

THE STRAPS EXTERIOR IS MADE IN NYLON OR LEATHER (DEPENDING ON THE MODEL). THE INSIDE IS MADE IN COTTON AND IS SEWED TOGETHER BY BG CRAFTSMEN WITH A DOUBLE STITCHING OF 42 STITCHES PER POINT. THIS MAKES THE QUALITY, DURATION AND RESISTANCE OF THE BG STRAPS ABSOLUTELY AMAZING. BG ANALYZES EACH DETAIL AND SUBJECTS EACH OF ITS PRODUCTS TO NUMEROUS TESTS BEFORE HANDING IT TO THE MUSICIAN. COTTON PADDING MINIMIZES THE FATIGUE EFFECT, WHICH ALLOWS THE MUSICIAN TO REHEARSE OR PERFORM LONGER WITH HIGHER PERFORMANCE.

BG STRAPS ARE HANDMADE IN FRANCE

A handwritten signature in black ink that reads "Franck Bichon".

PROTECT YOUR BODY FOR TOMORROW!

EVERY MUSICIAN HAS DIFFERENT NEEDS



NECK STRAPS
REST ON NECK



YOKE
REST ON SHOULDERS AND NECK



HARNAIS
REST ON SHOULDERS

BG NECK STRAPS HAVE THICK AND COMFORTABLE COTTON PADDING, (EXCEPT THE MODEL FLEX) THAT ABSORB SWEAT, PROVIDING HIGH COMFORT.

COTTON IS ONE OF THE OLDEST AND MORE FAMOUS FABRICS IN THE WORLD, IT GOES BACK TO EGYPT AND PREHISTORICALLY MEXICO. SOFTNESS, AND LIGHTNESS CHARACTERIZE IT .

THE ELASTIC VERSION OFFERS YOU ANOTHER ALTERNATIVE; COMPARED TO REGULAR NECK STRAPS, IT OFFERS THE FREEDOM AND ALLOWS YOU TO MOVE COMFORTABLY

SAFETY & EASY: OUR 3 SOLUTIONS

CONNECTORS ARE THE LINK BETWEEN THE STRAP AND THE INSTRUMENT. THE SAFETY OF THE INSTRUMENT AND THE COMFORT AND MOBILITY OF THE MUSICIAN DEPEND ON THEM. AT BG WE HAVE STUDIED, THROUGH HUNDREDS OF REHEARSALS, THE MOST PRACTICAL CONNECTION SYSTEM FOR EACH INSTRUMENT.

BG STRAPS OFFER THREE DIFFERENT HOOKS: **OPEN METAL HOOK (M)** **ABS PLASTIC SNAP HOOK (SH)** AND **METAL SNAP HOOK COATED (MSH)**.

OPEN METAL HOOKS ARE PERFECT FOR DOUBLERS WHO NEED SECURE AND FAST CHANGE WHILE ON STAGE. **SNAP HOOKS** ARE RECOMMENDED FOR KIDS AND FOR PEOPLE PLAYING ON A CHAIR SO THE SAX WILL NOT FALL DOWN. **METAL SNAP HOOK COATED** PREVENTS ANY SCRATCH ON SAX AND AVOIDS NOISES WHEN RECORDING.



M
MÉTAL



SH
ABS PLASTIC
SNAP HOOK



MSH
METAL SNAP HOOK
COATED

BG RECOMMENDS ONLY USING THE METAL SNAP HOOK COATED FOR BARITONE SAXOPHONE AND ALL SAXOPHONES PLAYED IN MARCHING BAND SETTINGS

REGULAR OR ELASTIC SLING



AT BG, EVERY DETAIL IS IMPORTANT. LONG AGO, WE CREATED THE ELASTIC VERSION OF OUR MOST POPULAR STRAP: "COMFORT".

THE DETAILS MAKE THE DIFFERENCE, THE ELASTIC AT BG STRAPS ARE DELIBERATELY LOCATED ON EACH SIDE AND NOT ON THE NECK, THUS AVOIDING FRICTION WHICH MAY CAUSE SKIN IRRITATION

REGULAR STRAPS HELP PLAYERS TO IMPROVE THE EMBOUCHURE CONTROL. ELASTIC STRAPS LIMIT NECK PRESSURE WHEN MOVING ON STAGE

EACH DESIGN IS DIFFERENT, IT IS UP TO EACH PLAYER TO FIND THE CONCEPT AND MODEL BEST SUITED TO THEIR EXPECTATIONS. PERSON TO FIND THE CONCEPT AND MODEL THAT BEST SUITS HIS OR HER NEEDS.

Franché Bichon

NECK STRAPS "ZEN"

THE MOST CALMING SUPPORTIVE STRAP



BLACK, WHITE OR RED LEATHER
COTTON PADDING



ZEN METAL EXTENDER



3 HOOK OPTIONS



M
METAL HOOK



SH
SNAP HOOK



MSH
METAL SNAP HOOK COATED

ZEN LEATHER COTTON PADDING

	S20Y M	SOPRANO - ALTO - TENOR SAX	BLACK	L
	S20Y SH	SOPRANO - ALTO - TENOR SAX	BLACK	L
	S20Y MSH	SOPRANO - ALTO - TENOR SAX	BLACK	L
	S22Y MSH	ALTO	BLACK	S
	S23Y MSH	SOPRANO - ALTO - TENOR - BARI SAX	BLACK	XL
	S28Y MSH	SOPRANO - ALTO - TENOR SAX	WHITE	L
	S29Y MSH	SOPRANO - ALTO - TENOR SAX	RED	L
				

NYLON NECK STRAPS

LONG-LASTING AND RELIABLE



STANDARD
RED



STANDARD
WHITE



BLACK, RED OR WHITE
SOFT NYLON



STANDARD

SOFT NYLON

	S30 M	A - T	BLACK	L
	S30 SH	A - T	BLACK	L
	S39 SH	A - T	RED	L
	S38 SH	A - T	WHITE	L



CONFORT
RED



CONFORT
ELASTIC



BLACK OR RED NYLON
COTTON PADDING



CONFORT

COTTON PADDING

	S10 M	A - T	BLACK	L
	S13 M	T - B	BLACK	XL
	S10 SH	A - T	BLACK	L
	S10E SH	A - T ELASTIC	BLACK	L
	S12 SH	A	BLACK	S
	S14 SH	A - T	BLACK	XL
	S15 SH	A	BLACK	XS
	S19 SH	A - T	RED	L
	S10 MSH	A - T	BLACK	L
	S13 MSH	T - B	BLACK	XL



NYLON



BLACK NYLON
COTTON PADDING



NYLON

COTTON PADDING

	S80 M	S - A - T	BLACK	L
	S82 M	CURVED SOPR.	BLACK	L
	S80 SH	S - A - T	BLACK	L
	S85 SH	CURVED SOPR.	BLACK	XS

**BG RECOMMENDS ONLY USING THE METAL SNAP HOOK
COATED FOR BARITONE SAXOPHONE AND ALL
SAXOPHONES PLAYED IN MARCHING BAND SETTINGS**

LEATHER NECK STRAPS

ELEGANT, LONG-LASTING AND RELIABLE



LEATHER



BLACK LEATHER
COTTON PADDING



ABS
ADJUSTER

LEATHER

COTTON PADDING



[S20 M](#)

S - A - T

BLACK

L



[S20 SH](#)

S - A - T

BLACK

L

S22 SH

A

BLACK

S



LEATHER "J"
RED



LEATHER "J"
WHITE



BLACK, RED OR WHITE
LEATHER
COTTON PADDING



METAL
ADJUSTER

LEATHER "J"

COTTON PADDING



[S20J MSH](#)

S - A - T

BLACK

L

[S22 JMSH](#)

A

BLACK

S

[S23 JMSH](#)

S - A - T - B

BLACK

XL

[S28J MSH](#)

S - A - T

WHITE

L

[S29J MSH](#)

S - A - T

RED

L

BG RECOMMENDS ONLY USING THE METAL SNAP HOOK
COATED FOR BARITONE SAXOPHONE AND ALL
SAXOPHONES PLAYED IN MARCHING BAND SETTINGS

BG ADJUSTERS

ABS & METAL ADJUSTER OFFER BOTH AN EASY, FAST AND RELIABLE ADJUSTMENT.

BG IS ALWAYS WORKING TO IMPROVE AND MATCH ALL DEMANDS FROM THE MUSICIAN.

THIS NOT ONLY INCLUDES DESIGNING TRENDY METAL BUCKLES AND ADDING COLOR STRAPS TO SATISFY ALL DRESS CODES WHILE REMAINING FASHIONABLE. IT ALSO MEANS COMFORT & QUALITY FOR THE MUSICIANS.

WHEN DETAILS MAKE DIFFERENCE



ZEN
METAL EXTENDER



METAL ADJUSTER



ERGONOMIC STRAPS

YOKE, SHOULDER & HARNESS



SPREAD THE
WEIGHT OVER
THE SHOULDERS



LEATHER NECK
COTTON PADDING

SPREAD THE WEIGHT
ON 1 SHOULDER



COTTON PADDING
THICK LEATHER PAD



LEATHER

COTTON PADDING



[S70 SH](#)

A - T

BLACK

L



S70 MSH

A - T

BLACK

L

S72 MSH

A - T

BLACK

S

S73 MSH

A - T - B

BLACK

XL

SHOULDER

THICK PAD COTTON PADDING



[S02 M](#)

A - T - B

BLACK

L



[S03 M](#)

A - T - B

BLACK

XL



HOMME
FORNE EN "U"



FEMME
FORNE EN "V"



**CONFORT
HOMME**
FORNE EN "U"



**CONFORT
FEMME**
FORNE EN "V"

HARNESS



[S40M](#)

A . T . B

MEN

L

[S41M](#)

A . T . B

WOMEN

L

[S40SH](#)

A . T

MEN

L



[S41SH](#)

A . T

WOMEN

L

[S42SH](#)

A . T

SMALL

S

[S43SH](#)

A . T

MEN

XL

[S44SH](#)

A . T

WOMEN

XL

[S40MSH](#)

A . T . B

MEN

L

[S41MSH](#)

A . T . B

WOMEN

L

[S42MSH](#)

A . T

SMALL

S

[S43MSH](#)

A . T . B

MEN

XL

[S44MSH](#)

A . T . B

WOMEN

XL

HARNESS COMFORT



[S40CM](#)

A . T . B

MEN

L



[S40CSH](#)

A . T .

MEN

L

[S41CSH](#)

A . T .

WOMEN

L

[S42CSH](#)

A . T .

SMALL

S

[S43CSH](#)

A . T .

MEN

XL



[S40CMSH](#)

A . T . B

MEN

L

[S41CMSH](#)

A . T . B

WOMEN

L

[S43CMSH](#)

A . T . B

MEN

XL

**BG RECOMMENDS ONLY USING THE METAL SNAP HOOK
COATED FOR BARITONE SAXOPHONE AND ALL
SAXOPHONES PLAYED IN MARCHING BAND SETTINGS**



CLICK ON THE CODES
TO ACCESS WEBSITE

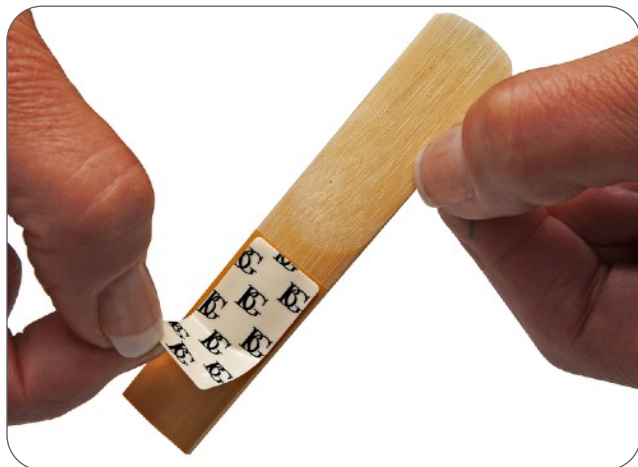
MADE IN FRANCE
WWW.BGFRANCKBICHON.COM

TIPS OF FRANCK BICHON

HOW TO EASILY IMPROVE YOUR COMFORT OF PLAYING

REED PERFORMERS:

THE REED PERFORMER IS A BG INNOVATION. MAKES GOOD REEDS LAST TWICE AS LONG. SAVES BAD REEDS BY IMPROVING THEIR PLAYABILITY. GIVES WARMER TONE TO WEAK & FUZZY REEDS.



ON GOOD NATURAL REEDS:

- STABILIZES THIN CANE CREATING STABLE SOUND
- INCREASES REED LIFE AT LEAST TWICE AS LONG
- HELPS TO ENSURE SAVING REEDS FOR CONCERT



ON SYNTHETIC REEDS:

- GIVES A ROUND SOUND THROUGH ALL REGISTERS.
- HELPS LIGATURE GRIP.

ON POOR NATURAL REEDS:

- SAVES BAD REEDS IMPROVING THEIR PLAYABILITY.
- REMOVES FUZZY SOUNDS FROM BAD REEDS.
- GETS WARMEST TONE FROM WEAK REEDS.



HANNAH SHILVOCK & THE REED PERFORMER

LIKE OTHERS BG ARTIST, HANNAH SHILVOCK, WAS HESITANT TO TRY THE REED PERFORMER THIS PAST YEAR BEING THAT THERE IS NOTHING IN THE MARKET LIKE IT. IN THIS VIDEO, YOU WILL SEE HANNAH PLAY TEST HER REEDS WITH AND WITHOUT IT AND YOU WILL HEAR HOW IT, AS SAID BY HANNAH—" **PLAYING THE REED PERFORMER ON A REALLY THIN REED, IT JUST MAKES THINGS FEEL REALLY MORE STABLE INSIDE MY MOUTH, AND I REALLY LIKE IT. I'D HIGHLY RECOMMEND."**

NEW

PACK OF 6 PCS

[A80 S](#) BB CLARINET, SOPRANO & ALTO SAX

[A80 L](#) BASS CLAR, TENOR & BARI SAX

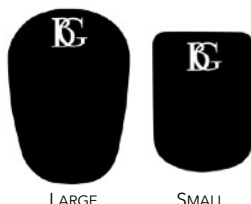
BOX OF 30 DE PCS

[A80 SB](#) BB CLARINET, SOPRANO & ALTO SAX

[A80 LB](#) BASS CLAR, TENOR & BARI SAX

MOUTHPIECE CUSHIONS: 2 SIZES - 3 THICKNESSES - 2 FINISHES

PROTECTS THE MOUTHPIECE FROM DAMAGE OF TEETH AND INCREASES COMFORT FROM THE VIBRATIONS WHICH DISTORT THE PLAYERS PERCEPTION OF THEIR TONE. MADE FROM SOFT AND LONG LASTING MATERIAL. SUITABLE FOR BOTH CLARINET AND SAXOPHONE.



PACK OF 6 DE PCS.

A10 S	BLACK	SMALL	0.8 MM
A10 L	BLACK	LARGE	0.8 MM
A11 S	CLEAR	SMALL	0.4 MM
A11 L	CLEAR	LARGE	0.4 MM
A12 S	CLEAR	SMALL	0.9 MM
A12 L	CLEAR	LARGE	0.9 MM

BOX OF 48 DE PCS.

A10 SB	BLACK	SMALL	0.8 MM
A10 LB	BLACK	LARGE	0.8 MM
A11 SB	CLEAR	SMALL	0.4 MM
A11 LB	CLEAR	LARGE	0.4 MM
A12 SB	CLEAR	SMALL	0.9 MM
A12 LB	CLEAR	LARGE	0.9 MM



FREE REUSABLE BOX.
48 PCS IN BULK.



L1

BG COMMUNITY



DAVE KOZ



MISTERIA SAXOPHONE QUARTET



QUATUOR DE SAXOPHONES ORIENTE



ADRIÁN SANDI



TEMITAYO KAYODE



FRANÇOIS DIAZ



EMILIANO VERNIZZI



PRESTON DUNCAN



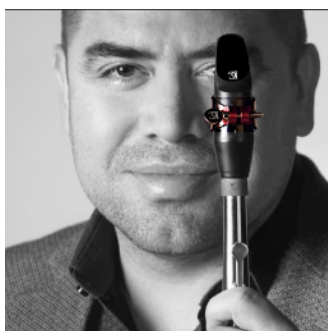
DEESAX



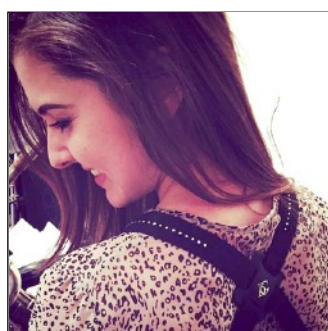
SAM GREENFIELD



ANDRÉS ROBLES



JAVIER OCAMPO



ADISON EVANS



HANSEL BERNUY



L1

BG COMMUNITY



TIM PRICE



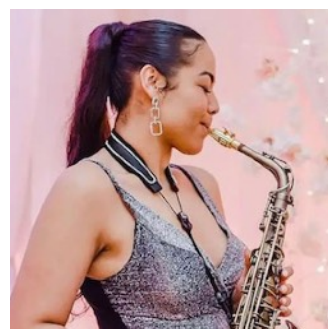
KEN GIOFFRE



JIMMY MERCHANT



ALEX TERRIER



ROMANA DE MENEGES



JAVIER VALERIO



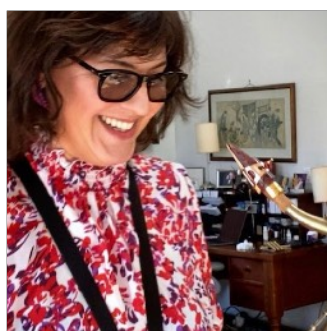
MIGUEL VILLAFRUELA



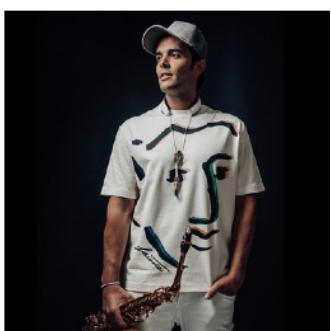
PEDRO SERRANO



BRENT BIRCKHEAD



ADA ROVATTI



SANDY SAX



FRED RENAUDIN



LUIS RENIZ



BRUNO SOARES



ISABELLA FABRI



MICHAEL WILBUR

